



TouchFlip

Repair Manual

How to contact us

Email us at help@opelmobile.com or call

☎ **0808 160 7167** in UK (8am to 4pm, Mon to Fri – excluding national holidays)

☎ **1800 456 902** in Ireland (8am to 4pm, Mon to Fri – excluding national holidays)

Table of Contents

1. Repair Disclaimer	3
2. Self-Repair Liability Waiver	3
3. About This Document	4
4. Ecodesign Directive	4
5. General Precautions	4
6. Required Tools and Materials.....	5
7. Illustrative Images of Related Components:	6
8. How to Power On and Power Off the TOUCHFLIP.....	13
9. How to Replace the Battery	14
10. How to Replace the LCD Screen	16
11. How to Replace the Front and Rear Cameras	18
12. How to Replace the Motor.....	19
13. How to Replace the Earpiece	20
14. How to Replace the Touch TP Assembly	21
15. How to Replace the DOME Sheet.....	21
16. How to Replace the Speaker	23
17. How to Replace the Volume Key FPC	23
18. How to Replace the Microphone	24
19. How to Assemble the SOS Key on the Speaker Bracket	25
20. How to Solder the Charging Dock Springs.....	26
21. How to Assemble the Motherboard	27
22. How to Assemble the Lower Case.....	32
23. How to Assemble the Secondary Board and Snap on the A-Cover	33
24. How to Replace the Bluetooth, GPS, and WiFi Antenna FPC	38
25. How to Replace the Diversity Antenna FPC.....	39
26. How to Replace the Main Antenna FPC	40
27. How to Remove the Hinge FPC	41
28. How to Assemble the Hinge FPC.....	42
29. Apply Body Label, Tighten Screws, and Apply Screw Tamper-Evident Stickers.....	44
30. Detailed Description of the Motherboard	45
31. Detailed Description of the Secondary Board	48

1. Repair Disclaimer

Before you begin, please read and fully understand the following:

Specialized Knowledge Required:

Repairing electronic devices is not simply disassembly and reassembly. You must have real expertise — including knowing how to safely handle components, prevent electrostatic discharge (ESD) damage to precision parts, and correctly use professional tools.

Risks You Will Face:

Risk of Device Damage:

Improper operation may cause permanent and irreversible damage such as PCB burn-out, cracked screens, data loss, or complete functional failure that cannot be restored.

Loss of Official Warranty:

Once the device is opened for self-repair, the official warranty becomes void, regardless of any future issues.

I hereby confirm that I am choosing to repair the device on my own, and I make the following irrevocable statements and acknowledgments.

2. Self-Repair Liability Waiver

2.1 My Ability:

I declare that I possess the technical knowledge, practical experience, and judgment necessary to safely handle and service this type of electronic device.

2.2 My Awareness of Risks:

I fully understand the potential risks involved in performing self-repair.

2.3 My Acceptance of Responsibility:

I clearly acknowledge that once repair begins, all related risks and responsibilities are borne by me alone.

3. About This Document

3.1 This document provides step-by-step instructions for device repair and maintenance, offering support for trained technicians and individuals who wish to perform self-repair.

3.2 Scope of This Guide Covers:

- Safe disassembly and reassembly procedures
- Replacement of specific hardware components
- Basic troubleshooting and visual inspection

● **3.3 This Guide Does *Not* Cover:**

- Advanced electrical diagnostics
- Software-level repair or firmware issues
- Modifications beyond manufacturer specifications

3.4 Intended Users:

This guide is intended for technicians and repair professionals.

4. Ecodesign Directive

4.1 The structure of the repair guide in this document includes:

4.2 Safety information

4.3 Required tools and materials

4.4 Replacement of specific components

4.5 Disassembly procedures

4.6 Assembly instructions

4.7 Troubleshooting

Each chapter includes checklists, simple step-by-step instructions, and references to related sections of this document.

5. General Precautions

Before repairing the product, please read all precautions in this document.

5.1 Before You Start the Repair

- Opening or repairing the device may cause electric shock, equipment damage, fire, personal injury, or other hazards.

- Ensure the work surface is clean and free of debris to avoid contaminating internal components.
- Wear an ESD wrist strap to prevent static discharge from damaging sensitive electronic components.
- Perform repairs in a clean, dry, well-ventilated area free of flammable materials.
- Ensure that no components are damaged during disassembly.
- Damaged components must be replaced.
- Ensure there are no extra screws or small parts left over after reassembly.
- Always tighten screws securely.
- Disconnect the device from all power sources before any disassembly.

6. Required Tools and Materials

Tool types and related images are as follows:

6.1 Phillips Screwdriver — used for removing screws.



6.2 Tweezers — used for removing small components or positioning component wiring.



6.3 Suction Cup with Pull Ring — used to assist in removing the main screen lens.



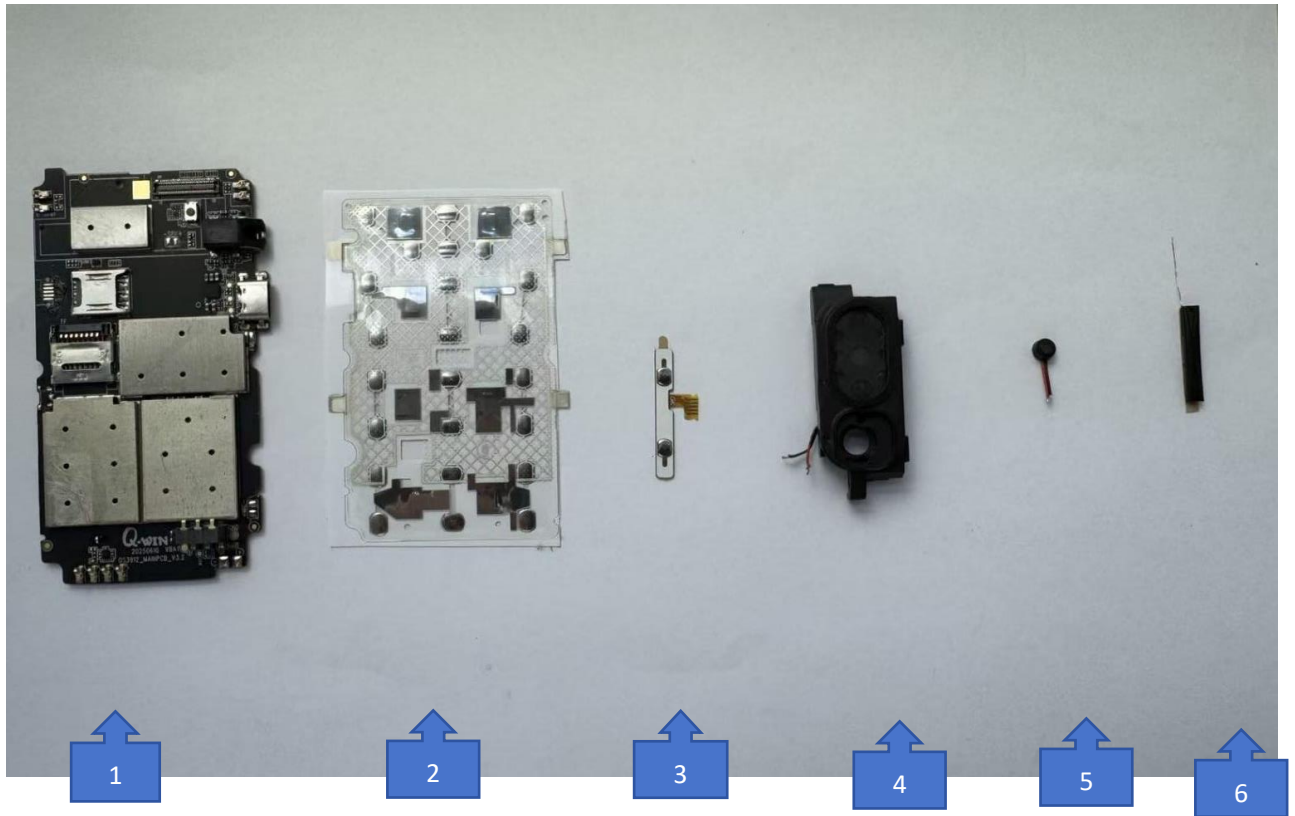
6.4 Temperature-Controlled Soldering Iron — used for soldering the lead wires of components such as the speaker, earpiece, microphone, and flashlight LED.

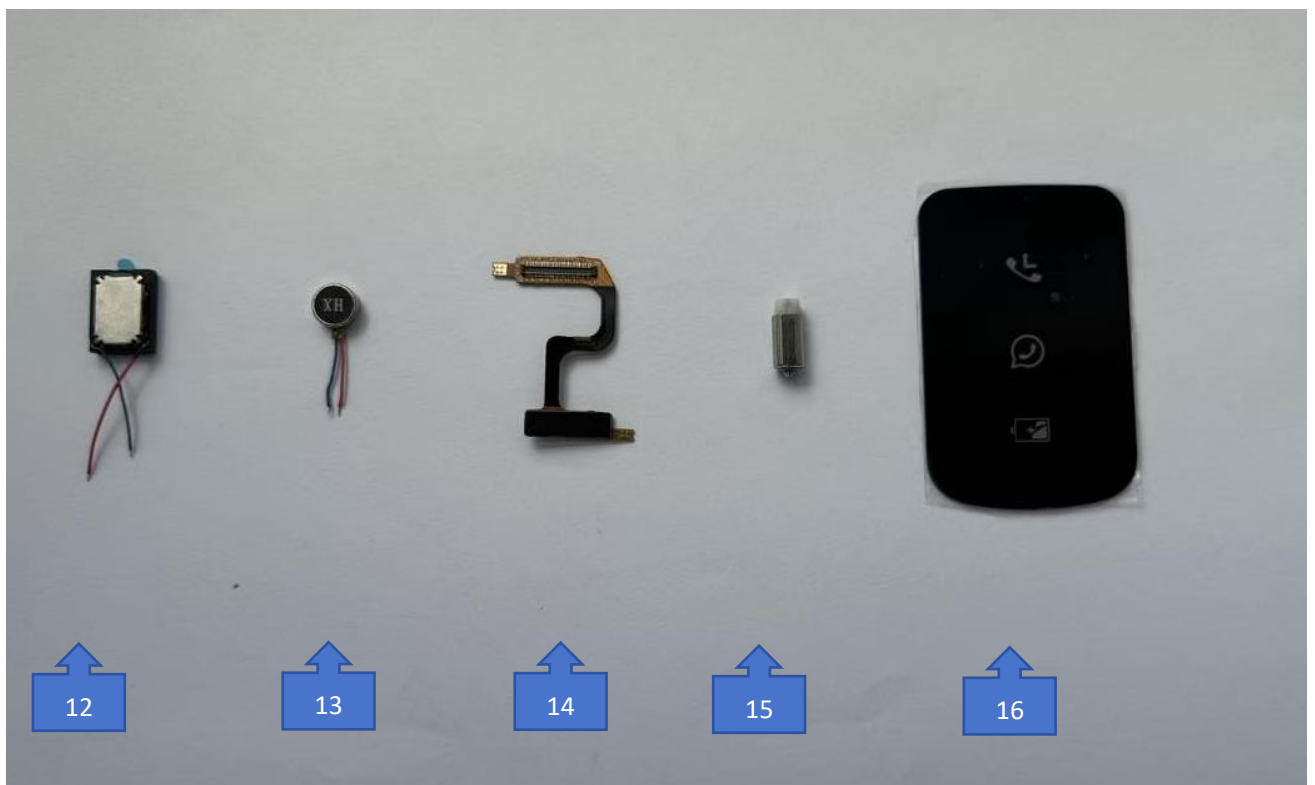


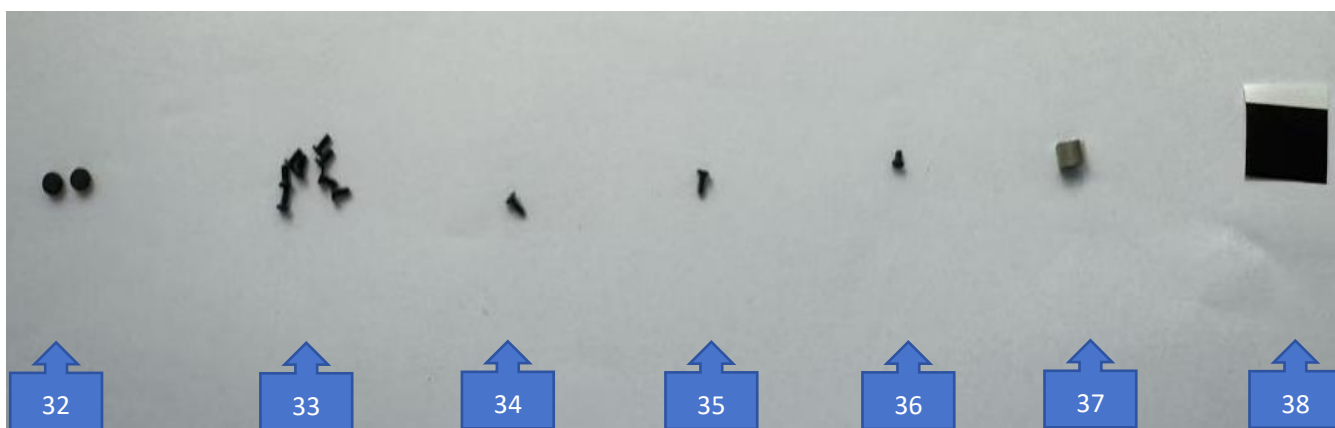
6.4 Materials: Alcohol — concentration $\geq 70\%$. It must be stored in a dedicated alcohol bottle, tightly sealed, and placed in a safe area.

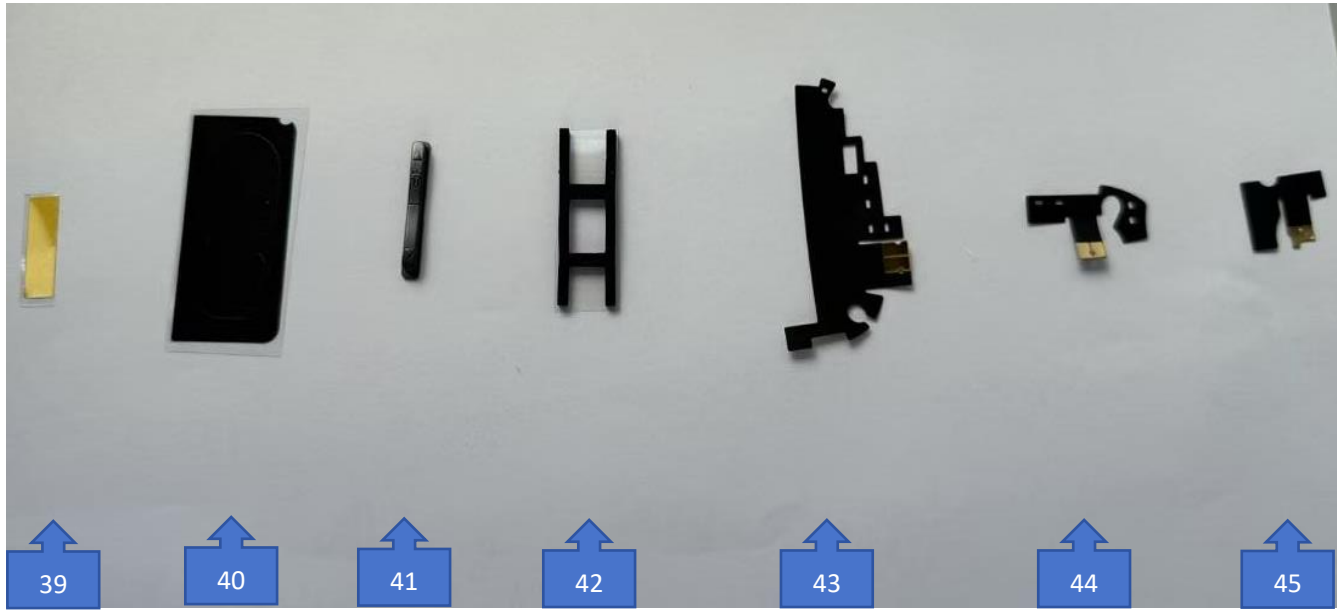


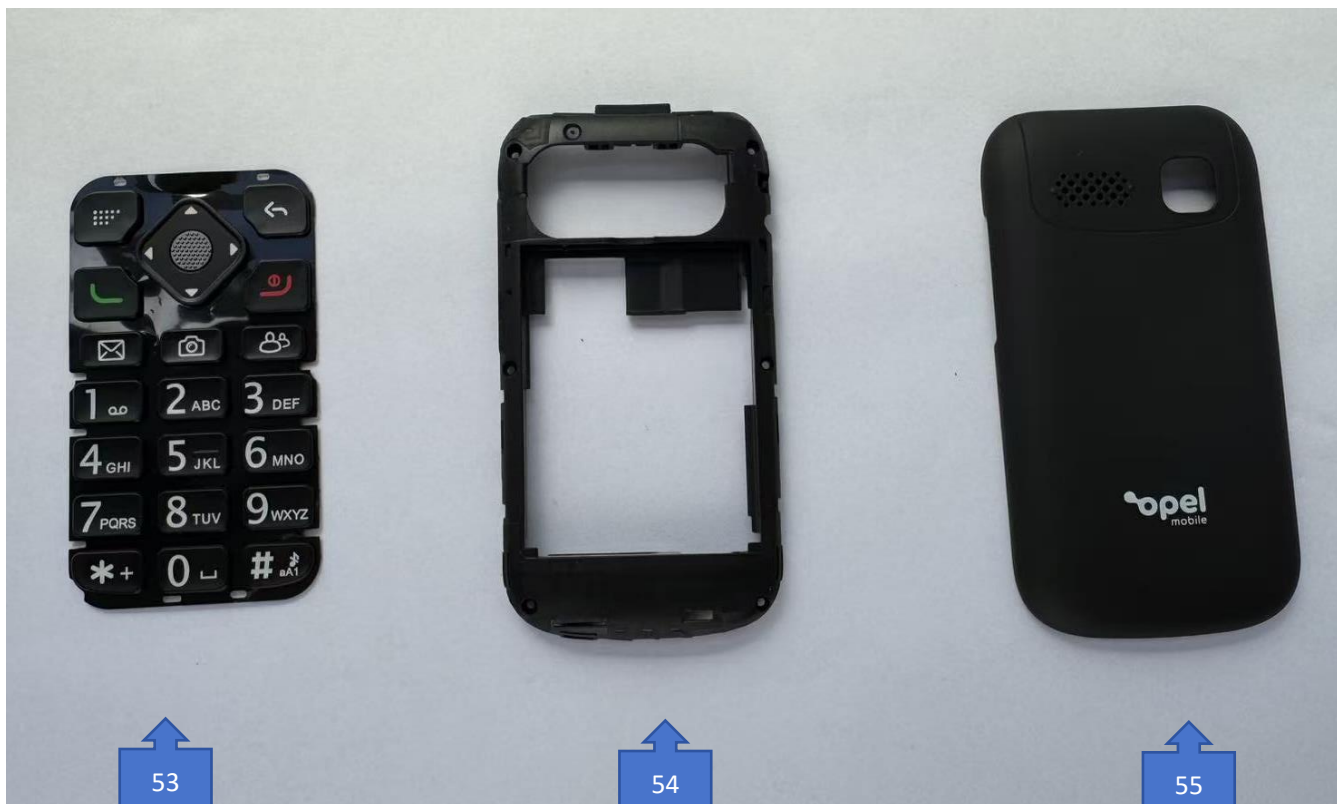
7. Illustrative Images of Related Components:











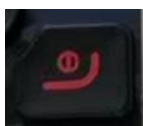
7.1 Detailed List of Related Components and Quantities

No.	Component Name	Qty
1	Mainboard PCBA	1
2	DOMe Sheet	1
3	Side-Key FPC	1
4	Speaker Module	1
5	Microphone	1
6	FM Radio Antenna	1
7	Sub-board PCBA	1
8	LCD Display	1
9	Touch Panel (TP) Assembly	1
10	Rear Camera	1
11	Front Camera	1
12	Earpiece	1
13	Vibration Motor	1
14	Hinge FPC	1
15	Hinge	1
16	A-cover Glass Lens	1
17	Charging Contact 1	1
18	Charging Contact 2	1
19	B-cover Hinge Grounding Spring	1
20	C-cover Hinge Grounding Spring	1
21	Flip-cover Magnet	1
22	C-cover Waterproof Plug	1
23	B-cover Waterproof Plug	1
24	B-cover Hinge Grounding Spring Extension Wire	1
25	SOS Key	1
26	C-cover Impact-Absorbing Plug	1
27	B-cover Impact-Absorbing Plug	1
28	SOS Key Silicone Sleeve	1
29	Camera Lens	1
30	B-cover Hinge Limit Stopper	1
31	Flashlight Diffuser/Light Cover	1
32	B-cover Screw Plugs	2
33	Device Screws	8
34	Sub-board Locking Screw	1
35	C-cover Hinge Grounding	1

	Spring			
36	B-cover Hinge	Grounding	1	
	Spring			
37	Speaker	Grounding	1	
	Conductive Foam			
38	DOME	Sheet	3	
	Light-Blocking Film			
39	Camera Pad	Insulating	1	
	Tape			
40	Speaker Sealing Sticker		1	
41	Side Key		1	
42	Sub-board Foam		1	
43	Main Antenna FPC		1	
44	Bluetooth/GPS/WiFi 3-in-1	Antenna	1	
45	Diversity Antenna		1	
46	Battery Cover	Sealing	1	
	Foam			
47	Mainboard	Shielding	1	
	Conductive Cloth			
48	TP Flex Cable IC	Shielding	1	
	Conductive Cloth			
49	Magnet	Double-sided	1	
	Adhesive			
50	A-cover Assembly		1	
51	B-cover Assembly		1	
52	C-cover Assembly		1	
53	Main Keypad Assembly		1	
54	D-cover Assembly		1	
55	Battery Cover Assembly		1	

8. How to Power On and Power Off the TOUCHFLIP

Before performing any repair, you must power off the device to prevent damage to internal components and to ensure safety during disassembly. After the repair is completed and the device is fully reassembled, you must power it on again to verify that it operates as expected.



8.2 Power Off TOUCHFLIP

Press and hold the phone's power-off button for 5 seconds until the screen turns off.

9. How to Replace the Battery

9.1 Steps for Replacing the Battery

Parts required: 1 battery

Steps:

1. Remove the Battery Cover Assembly:

At the lower-left corner of the battery cover assembly, there is a slot for removing the battery cover. Insert your thumb into the slot and gently lift the battery cover upward (see Figure 1). Once removed, place the battery cover in a safe area to avoid damage.

2. Remove the Battery:

At the upper center of the battery, there is a slot for removing the battery. Insert your index finger into the slot and gently lift the battery upward (see Figure 2). Carefully remove the battery, ensuring that you do not damage the motherboard's battery connector. Place the removed battery in a safe area.

9.2 Distribution Instructions

- Remove the battery cover



Remove the battery



The removed battery



9.3 Install the New Battery

Place the new battery into the phone's battery compartment. When assembling, make sure the battery's latch aligns with the lower case frame first, then tilt the battery into place (see Figure 1). After the battery is properly installed, securely snap the battery cover back onto the device as shown in Figure 2.



Figure

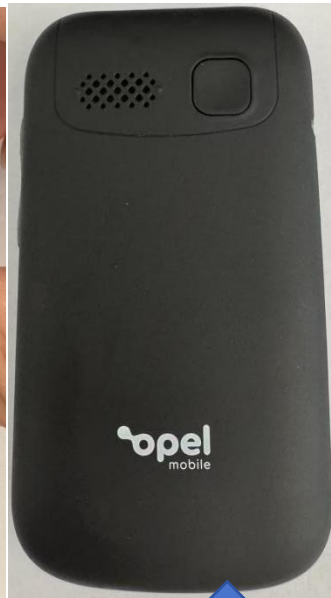


Figure 2

10. How to Replace the LCD Screen

Fault Diagnosis: If the display shows distorted images, no display, or a cracked screen, it is considered an LCD screen issue.

10.1 Steps for Replacing the LCD Screen

Parts Required: 1 LCD screen

10.2 Required Tools:

- Phillips screwdriver
- Tweezers
- Constant-temperature soldering iron

10.3 Required Materials:

LCD screen

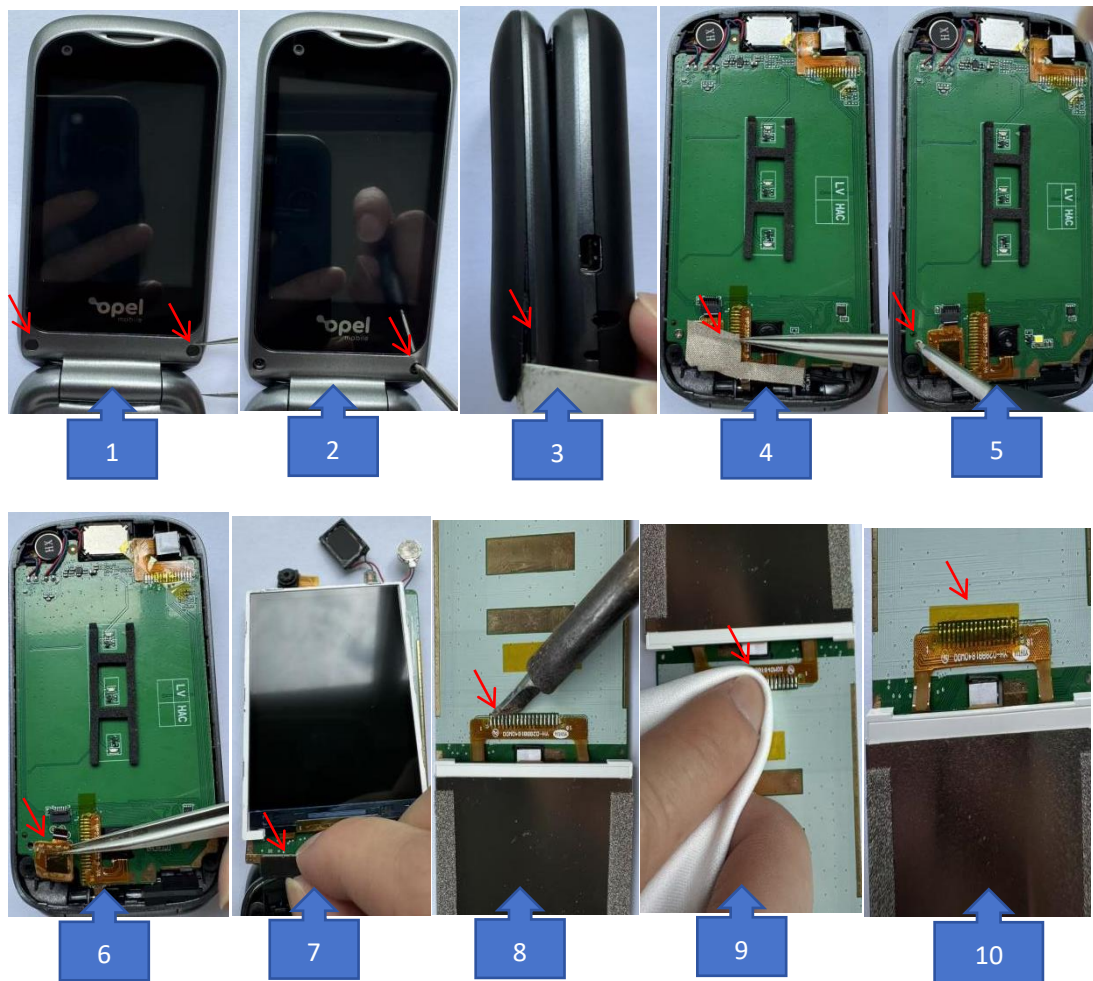
Insulation tape

10.4 Precautions:

Before disassembly, take appropriate protective measures. Wear an anti-static wrist strap and carefully control the temperature of the soldering iron.

Steps:

- **Remove B-cover screws:**
Remove the screw plugs on the B-cover (see Figure 1), then use a Phillips screwdriver to remove the 2 screws from the B-cover (see Figure 2).
- **Remove A-cover:**
Use a prying tool to detach the A-cover (see Figure 3).
- **Remove the TP conductive cloth and secondary board:**
Use tweezers to remove the TP conductive cloth (see Figure 4).
Remove the screws on the secondary board with a Phillips screwdriver (see Figure 5), then disconnect the TP flex cable (see Figure 6).
Remove the secondary board and the hinge FPC connector assembly (see Figure 7).
- **Remove and replace the LCD screen:**
Use a soldering iron to remove the LCD screen and install the new LCD screen (see Figure 8).
- **Clean and insulate:**
After soldering, clean the LCD flex cable solder pads with alcohol. Then apply insulation tape to the LCD solder pads, ensuring it is flat and smooth (see Figures 9 and 10).



11. How to Replace the Front and Rear Cameras

Fault Diagnosis: If photos appear distorted, cannot be taken, have dark shadows, or flicker, the camera is considered faulty.

11.1 Steps for Replacing the Cameras

Parts Required:

1 rear camera

1 front camera

11.2 Required Tool:

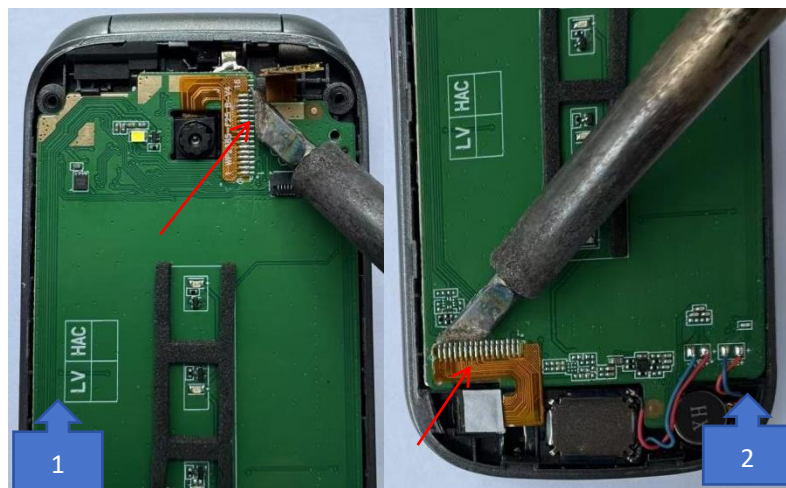
Constant-temperature soldering iron

11.3 Replace the Rear Camera:

Use the soldering iron to remove the faulty rear camera, then solder the new camera module onto the motherboard (see Figure 1).

11.4 Replace the Front Camera:

Use the soldering iron to remove the faulty front camera, then solder the new camera module onto the motherboard (see Figure 2).



12. How to Replace the Motor

Fault Diagnosis: If there is no vibration, the motor is considered faulty.

12.1 Steps for Replacing the Motor

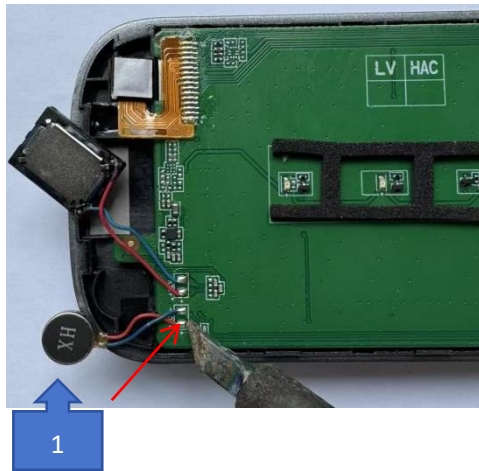
Parts Required: 1 motor

12.2 Required Tool:

Constant-temperature soldering iron

12.3 Replace the Motor:

Use the soldering iron to remove the faulty motor, then solder the new motor module onto the motherboard (see Figure 1).



13. How to Replace the Earpiece

Fault Diagnosis: If there is no sound or distorted sound from the earpiece, the earpiece is considered faulty.

13.1 Steps for Replacing the Earpiece

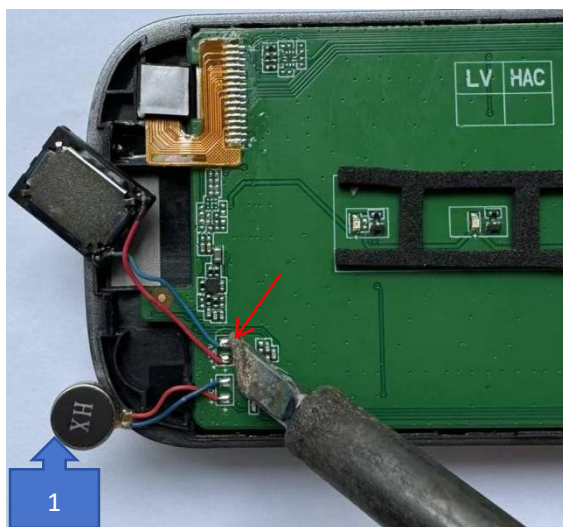
Parts Required: 1 earpiece

13.2 Required Tool:

Constant-temperature soldering iron

13.3 Replace the Earpiece:

Use the soldering iron to remove the faulty earpiece, then solder the new earpiece module onto the motherboard (see Figure 1).



14. How to Replace the Touch TP Assembly

Fault Diagnosis: If the touchscreen is unresponsive or touch input is misaligned, the touch TP assembly is considered faulty.

14.1 Steps for Replacing the Touch TP Assembly

Parts Required: 1 touch TP assembly

14.2 Required Tool:

Suction cup with pull ring

14.3 Replace the Touch TP Assembly:

Use the suction cup with pull ring to grip the TP cover, lift it upward to remove the TP cover, and install the new touch TP assembly onto the B-cover (see Figure 1).



15. How to Replace the DOME Sheet

Fault Diagnosis: If buttons are unresponsive, fail to work, or show INT-related issues, the DOME sheet may be faulty.

15.1 Steps for Replacing the DOME Sheet

Parts Required: 1 DOME sheet

15.2 Required Tools and Materials:

Tweezers

Lint-free cloth

Alcohol

15.3 Remove the body label:

Use tweezers to lift off the body label attached to the lower case (see Figure 1).

15.4 Remove the lower case screws:

Use a Phillips screwdriver to remove the 6 screws from the lower case (see Figure 2).

15.5 Remove the lower case:

Use a prying tool to detach the lower case (see Figure 3).

15.6 Remove the speaker and hinge FPC connector:

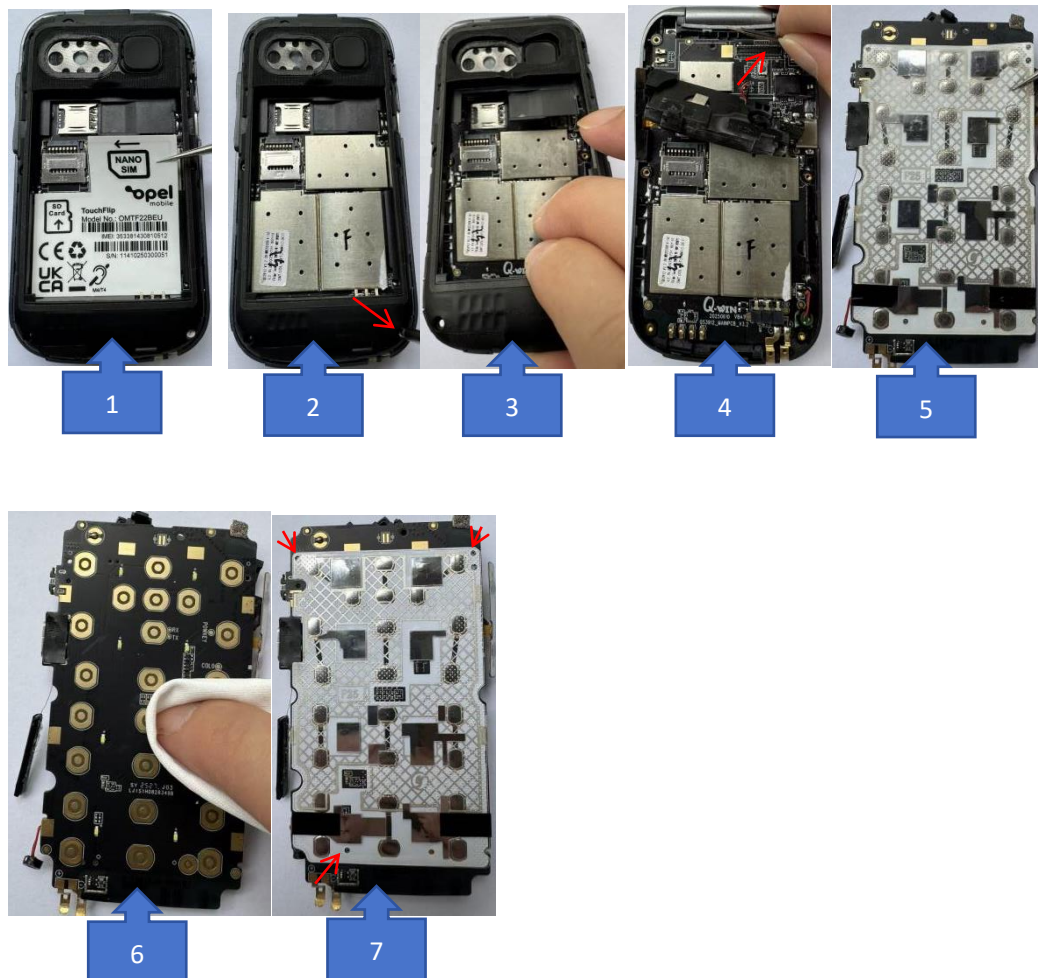
Take out the speaker and the hinge FPC connector at the motherboard end, then remove the motherboard from the C-cover (see Figure 4).

15.7 Remove the DOME sheet:

Use tweezers to gently lift the edge of the DOME sheet and peel it off (see Figure 5).

15.8 Clean and install the new DOME sheet:

Clean the DOME sheet contact pads on the PCBA motherboard with alcohol. After cleaning, align the new DOME sheet with the white positioning dots on the PCBA motherboard (see Figures 6 and 7).



16. How to Replace the Speaker

Fault Diagnosis: If there is no sound, distorted sound, or low volume from the speaker, the speaker is considered faulty.

16.1 Steps for Replacing the Speaker

Parts Required: 1 speaker

16.2 Required Tools and Materials:

Tweezers

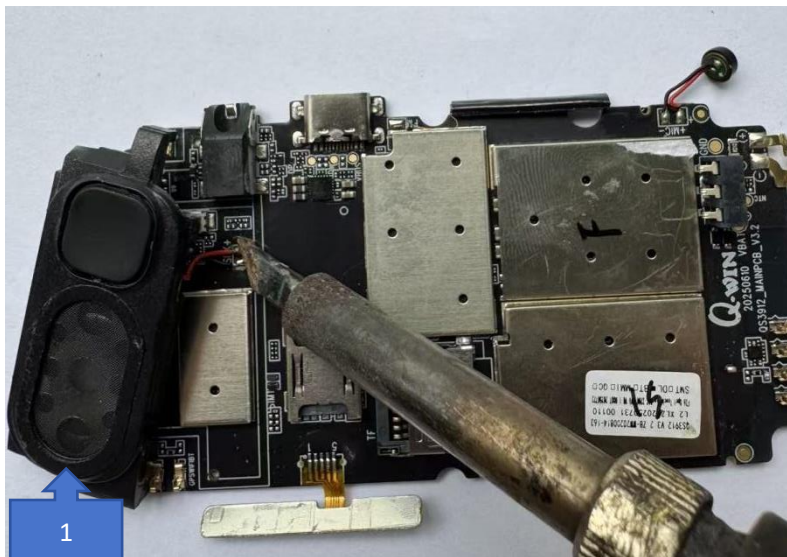
Soldering iron

16.3 Disassembly Reference:

Follow the steps in **Section 15.1** for removing the DOME sheet as reference, then proceed to replace the speaker.

16.4 Replace the Speaker:

Use the soldering iron to remove the faulty speaker, then solder the new speaker module onto the motherboard (see Figure 1).



17. How to Replace the Volume Key FPC

Fault Diagnosis: If the volume key cannot increase or decrease the sound, the volume

key FPC is considered faulty.

17.1 Steps for Replacing the Volume Key FPC

Parts Required: 1 volume key FPC

17.2 Required Tool:

Constant-temperature soldering iron

17.3 Replace the Volume Key FPC:

Use the soldering iron to remove the faulty volume key FPC, then solder the new FPC module onto the motherboard (see Figure 1).



18. How to Replace the Microphone

Fault Diagnosis: If during calls the other party cannot hear any sound, the microphone is considered faulty.

18.1 Steps for Replacing the Microphone

Parts Required: 1 microphone

18.2 Required Tool:

Constant-temperature soldering iron

18.3 Replace the Microphone:

Use the soldering iron to remove the faulty microphone, then solder the new microphone module onto the motherboard (see Figure 1).



19. How to Assemble the SOS Key on the Speaker Bracket

19.1 Steps for Assembling the SOS Key on the Speaker Bracket

Parts Required:

- 1 speaker
- 1 SOS key
- 1 SOS key silicone cover

19.2 Assemble the SOS Key with Silicone Cover:

Take the SOS key and the silicone cover. Align the hole in the silicone cover with the central post of the SOS key, then press down to secure it in place (see Figures 1 and 2).

19.3 Install the SOS Key on the Speaker:

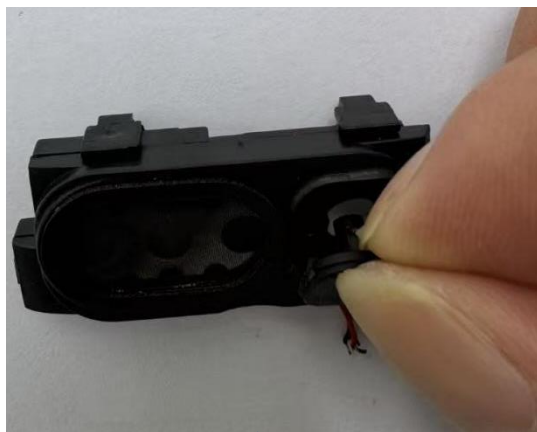
Take the speaker and align the assembled SOS key component with the SOS key slot on the speaker. Press into place until fully seated (see Figures 3 and 4).



1



2



3



4

20. How to Solder the Charging Dock Springs

20.1 Steps for Soldering the Charging Dock Springs

Parts Required: 2 charging dock springs

20.2 Required Tools:

Tweezers

Constant-temperature soldering iron

20.3 Solder the Charging Dock Springs:

First, install the motherboard into the C-cover. Align the positioning holes of the charging dock springs with the positioning posts on the C-cover and place them into the corresponding slots. Then use the soldering iron to secure them in place.



21. How to Assemble the Motherboard

21.1 Steps for Assembling the Motherboard into the C-Cover

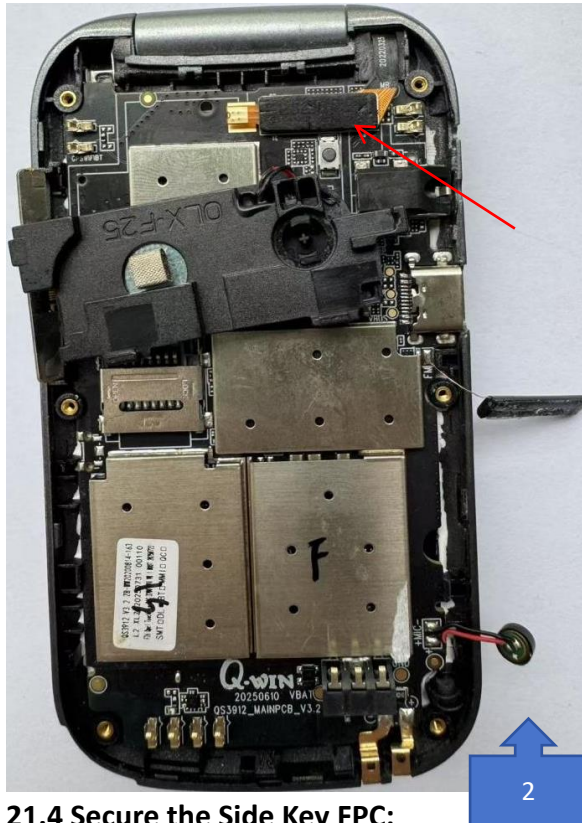
21.2 Install the Motherboard:

Place the motherboard into the C-cover. Use the 4 clips on the C-cover to secure the motherboard in place, preventing it from shifting or rebounding and ensuring it lies flat within the C-cover (see Figure 1).



21.3 Secure the Hinge FPC Connector onto the Motherboard:

Fasten the hinge FPC connector onto the motherboard as shown in Figure 2.



21.4 Secure the Side Key FPC:

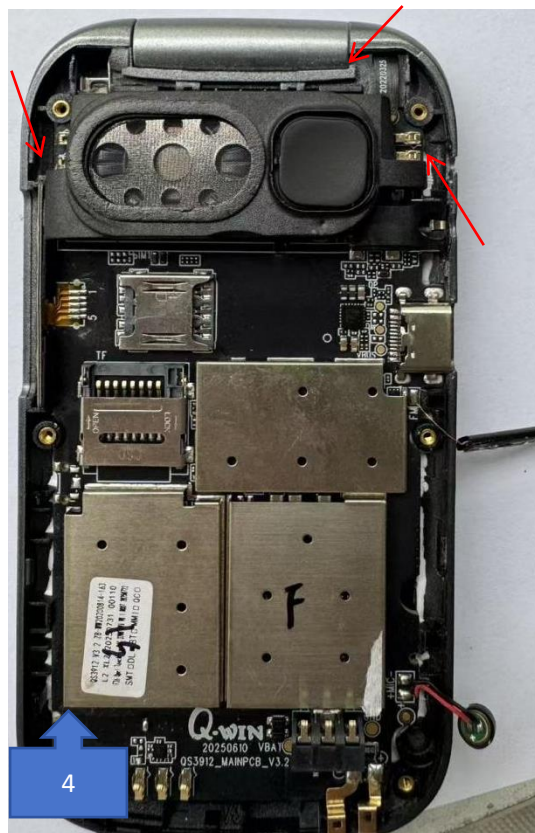
Place the side key FPC into the slot in the C-cover and fix it in position (see Figure 3).



21.5 Install the Speaker Bracket:

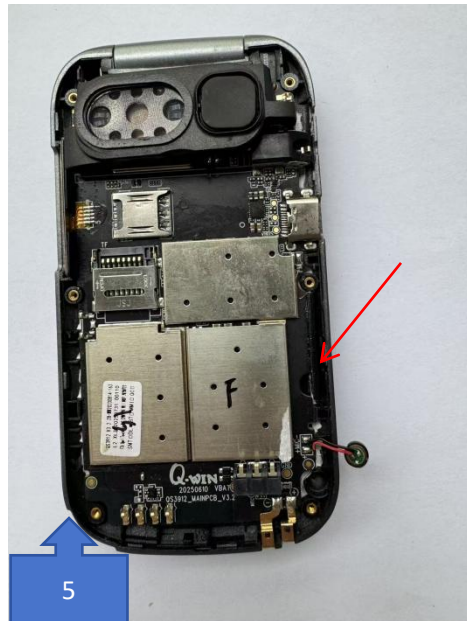
Place the speaker bracket onto its designated mounting position on the motherboard

(see Figure 4).



21.6 Secure the FM Antenna:

Place the FM antenna in its designated position and fix it in place (see Figure 5).



21.7 Secure the Microphone:

Place the microphone into the microphone slot in the C-cover and fix it in position (see Figure 6).



22. How to Assemble the Lower Case

22.1 Steps for Assembling the Lower Case

Parts Required: 1 lower case

22.2 Preparation:

Take the semi-assembled unit from Section 21 and proceed to assemble the lower case.

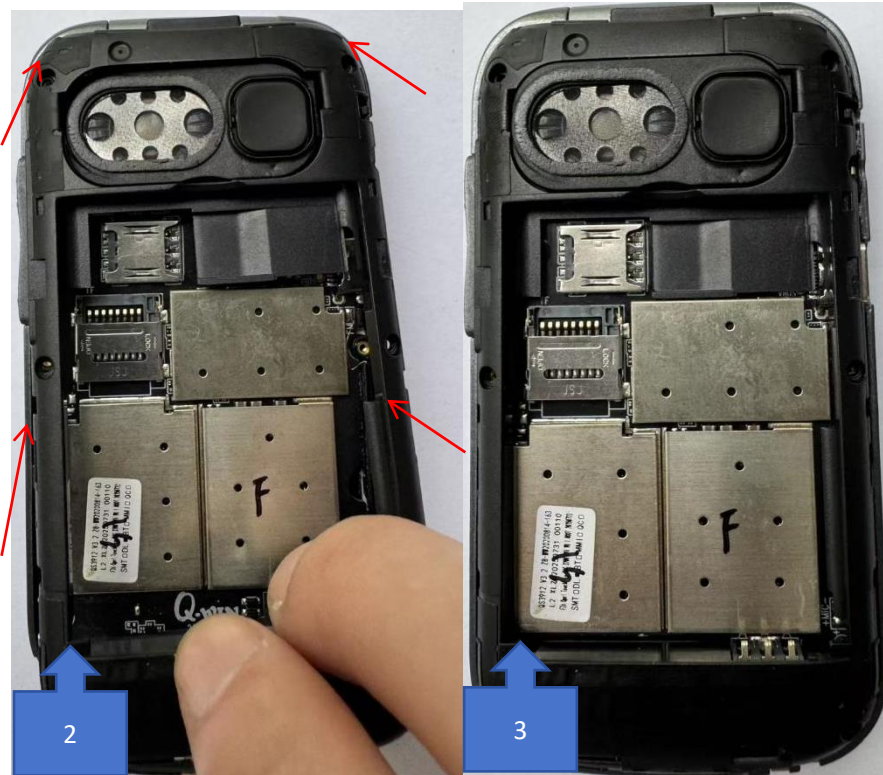
22.3 Install the Side Keys:

Place the side keys into the slots in the C-cover (see Figure 1). Pay attention to the orientation: the key with the flashlight symbol should be installed facing upward.



22.4 Install the Lower Case:

Take 1 lower case and align the speaker hole with the speaker. Press downward to engage the lower case clips with the C-cover clips, securing them together (see Figures 2 and 3).



23. How to Assemble the Secondary Board and Snap on the A-Cover

23.1 Procedure:

Install the secondary board onto the B-cover and snap on the A-cover.

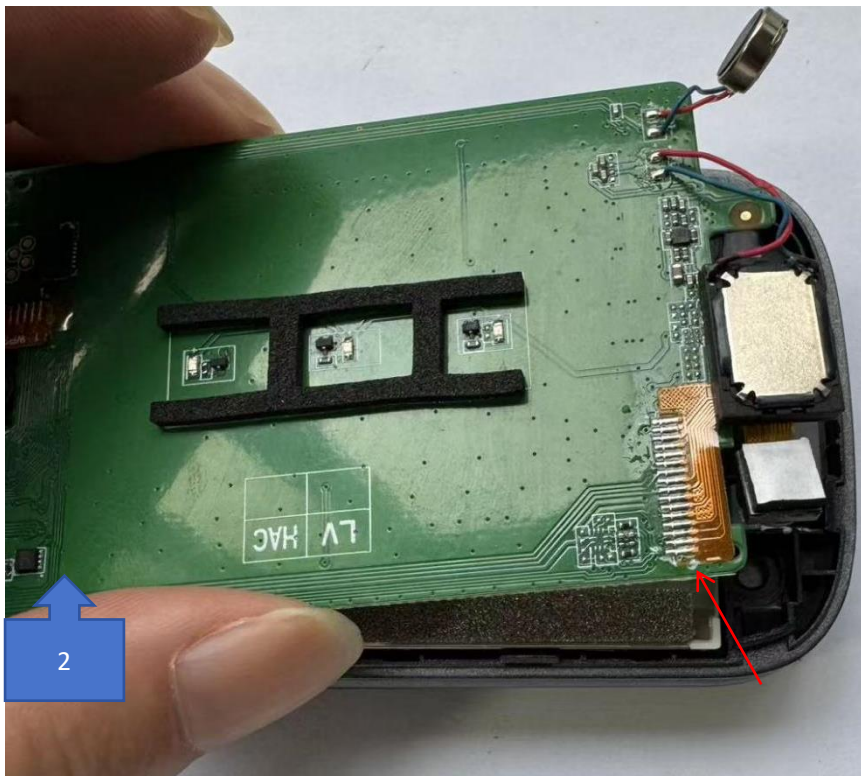
23.2 Secure the Hinge FPC Connector on the Secondary Board:

Fasten the hinge FPC connector onto the secondary board as shown in Figure 1.



23.3 Install the LCD Screen:

Place the LCD screen into the LCD slot in the B-cover (see Figure 2).



23.4 Snap the Secondary Board onto the B-Cover:

Press the secondary board onto its designated clips on the B-cover to prevent it from

shifting or rebounding, ensuring it lies flat on the B-cover (see Figure 3).



23.5 Secure the Earpiece and Motor:

Place the earpiece and motor into their corresponding slots in the B-cover and fix them in position (see Figure 4).



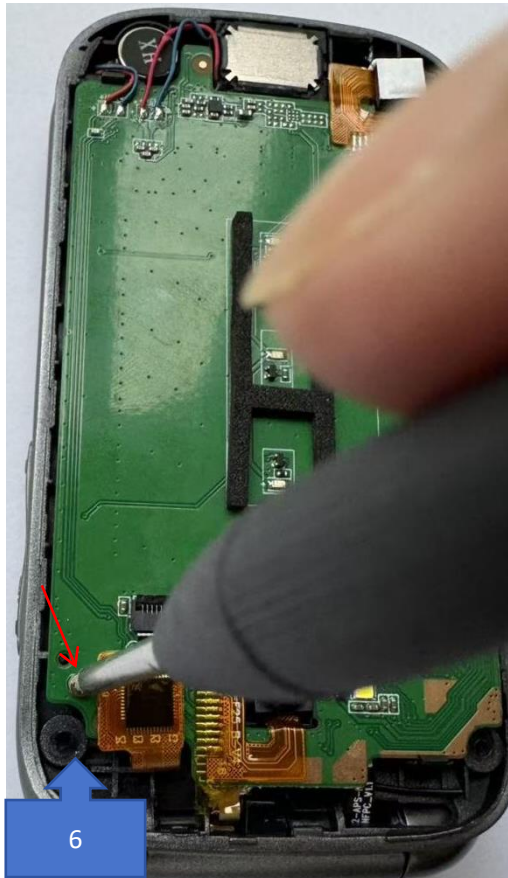
23.6 Connect the Secondary Board TP Flex Cable:

First, open the latch of the secondary board TP connector, then insert the TP flex cable into the connector on the secondary board (see Figure 5).



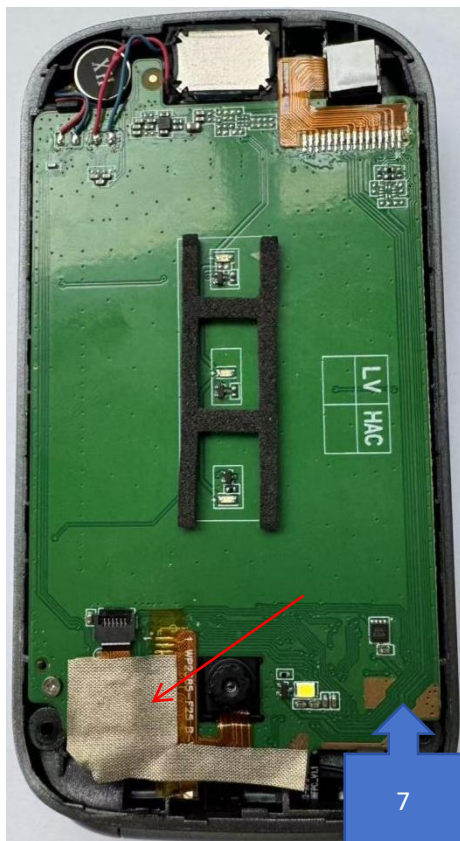
23.7 Secure the Secondary Board with Screws:

Tighten the screws to fix the secondary board in place (see Figure 6).



23.8 Apply Conductive Cloth to the TP IC Area:

Place the conductive cloth over the TP IC position as shown in Figure 7.



23.9 Install the A-Cover:

Take 1 A-cover and align its clips with the clips on the B-cover. Press downward to snap them together (see Figure 8).

Tighten the screws on the B-cover (see Figure 9).

Install the screw plugs on the B-cover (see Figure 10).



24. How to Replace the Bluetooth, GPS, and WiFi Antenna FPC

24.1 Steps for Replacing the Antenna FPC

Parts Required: 1 combined Bluetooth/GPS/WiFi antenna FPC

24.2 Required Tool:

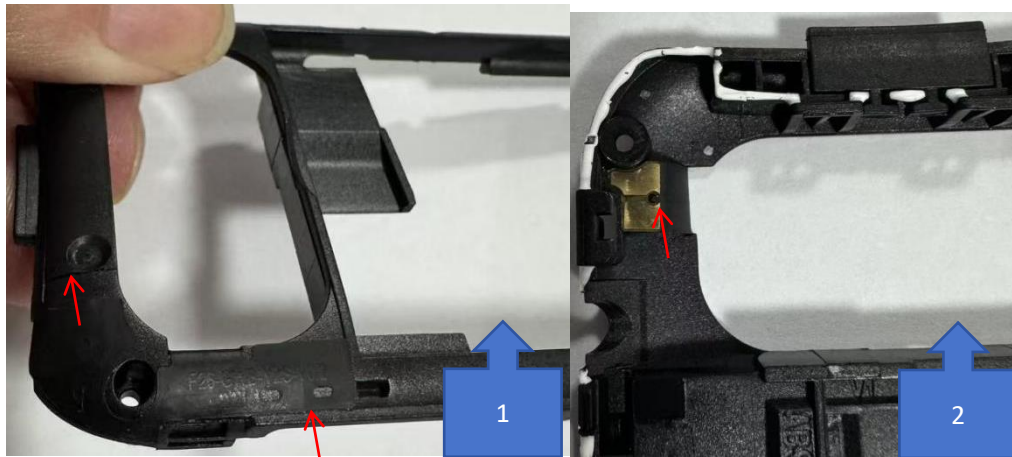
1 pair of tweezers

24.3 Install the Antenna FPC:

Peel off the double-sided adhesive from the combined antenna FPC, then align it with the edges of the lower case slot and press it into place (see Figure 1).

24.4 Align the FPC Contacts:

Align the positioning holes of the FPC gold finger contacts with the positioning posts and secure it in place (see Figure 2).



25. How to Replace the Diversity Antenna FPC

25.1 Steps for Replacing the Diversity Antenna FPC

Parts Required: 1 diversity antenna FPC

25.2 Required Tool:

1 pair of tweezers

25.3 Install the Diversity Antenna FPC:

Peel off the double-sided adhesive from the diversity antenna FPC, then align it with the edges of the lower case slot and press it into place (see Figure 1).

25.4 Align the FPC Contacts:

Align the positioning holes of the FPC gold finger contacts with the positioning posts and secure it in place (see Figure 2).



26. How to Replace the Main Antenna FPC

26.1 Steps for Replacing the Main Antenna FPC

Parts Required: 1 main antenna FPC

26.2 Required Tool:

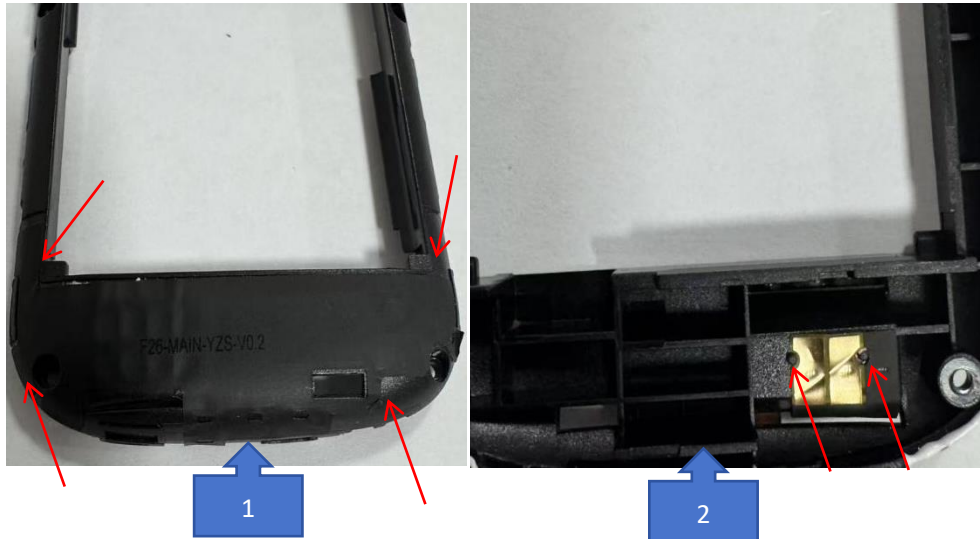
1 pair of tweezers

26.3 Install the Main Antenna FPC:

Peel off the double-sided adhesive from the main antenna FPC, then align it with the edges of the lower case slot and press it into place (see Figure 1).

26.4 Align the FPC Contacts:

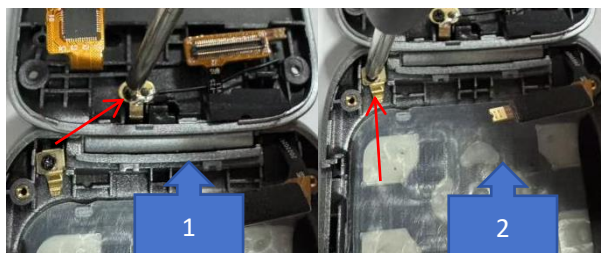
Align the positioning holes of the FPC gold finger contacts with the positioning posts and secure it in place (see Figure 2).



27. How to Remove the Hinge FPC

27.1 Remove the Hinge Ground Springs:

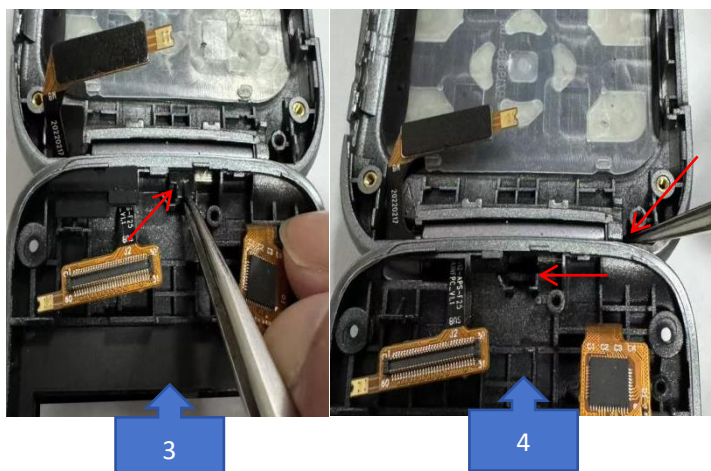
Remove the hinge ground spring from the C-cover and the hinge ground spring from the B-cover (see Figures 1 and 2).



27.2 Remove the Hinge Stopper:

Remove the hinge stopper (see Figure 3).

Insert tweezers into the hinge hole in the C-cover and gently push to the left to fully slide the hinge into the B-cover (see Figure 4).



27.3 Separate the B-Cover and C-Cover:

After pushing the hinge into the B-cover, gently pry the B-cover and C-cover apart to separate them (see Figure 5).

Remove the complete B-cover, C-cover, and hinge FPC assembly (see Figure 6).

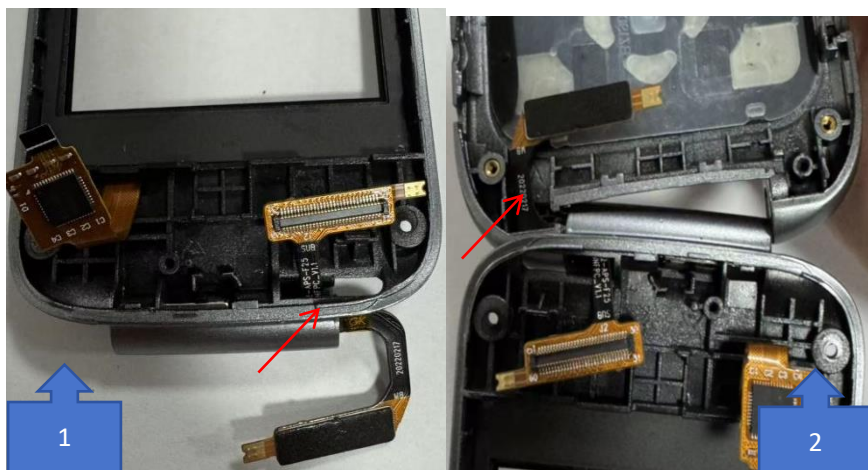


28. How to Assemble the Hinge FPC

28.1 Install the Hinge FPC:

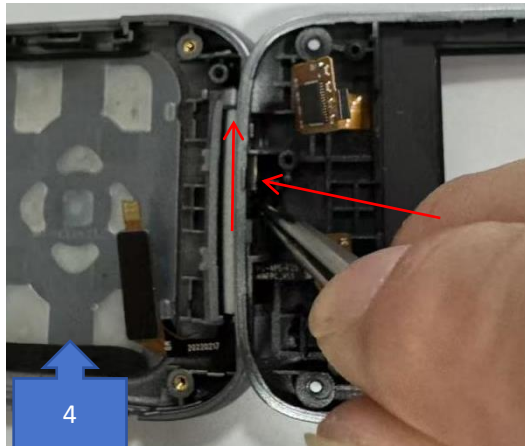
First, insert the secondary board end of the hinge FPC into the B-cover (see Figure 1).

Then insert the motherboard end of the hinge FPC into the C-cover (see Figure 2).



28.2 Insert the Hinge into the B-Cover:

Use tweezers to position the hinge in the B-cover hinge hole. Gently push to the right to fully insert the hinge into the B-Cover and C-Cover hole (see Figure 4).



28.3 Install the Hinge Stopper and Ground Springs:

Insert the hinge stopper into the B-cover.

Install the C-cover hinge ground spring and secure it with screws.

Install the B-cover hinge ground spring and secure it with screws (see Figure 5).



29. Apply Body Label, Tighten Screws, and Apply Screw Tamper-Evident Stickers

29.1 Apply the Body Label:

Place the body label completely inside the battery compartment of the lower case (see Figure 1).

29.2 Tighten the Screws:

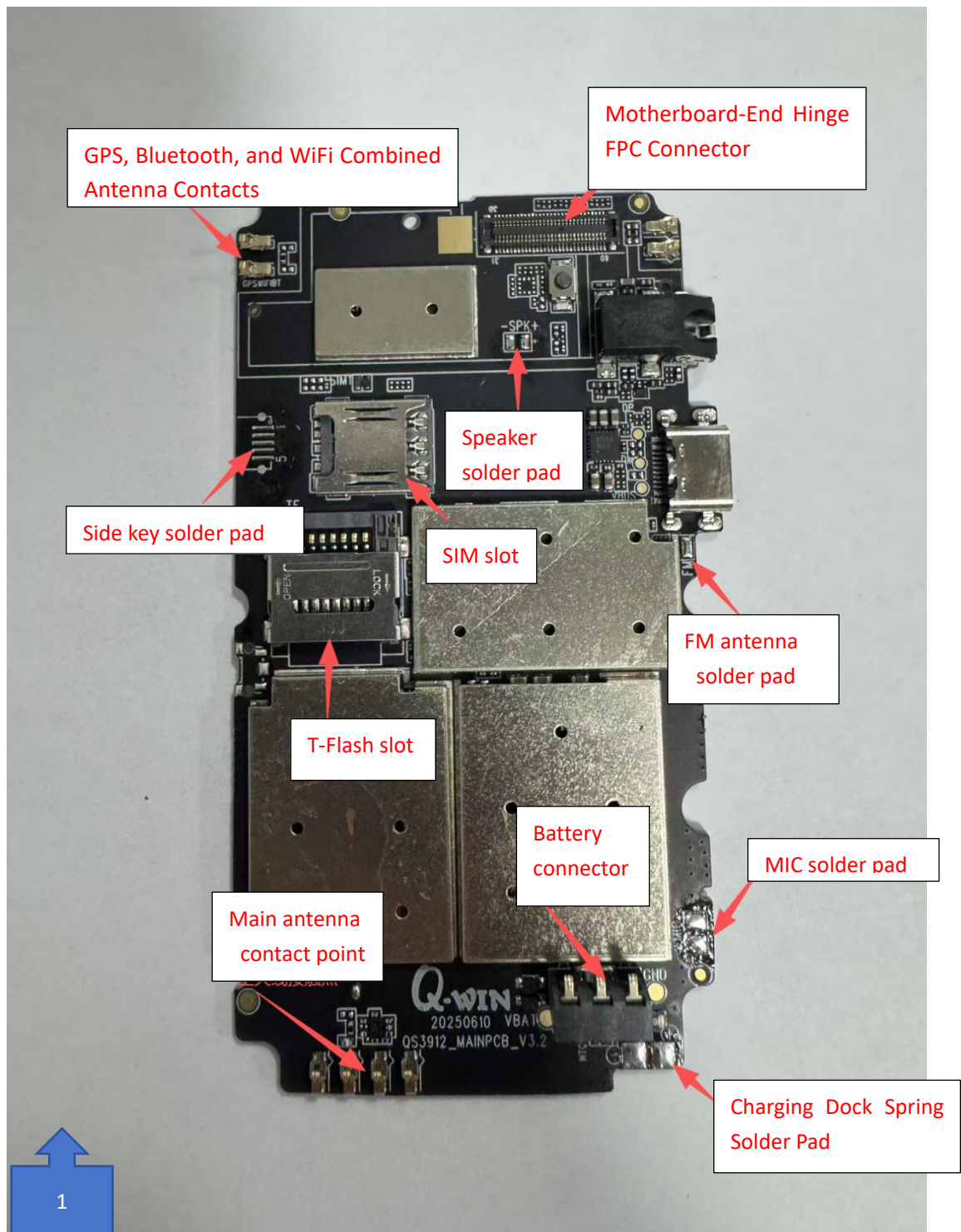
Install the 6 screws into the screw holes of the lower case.

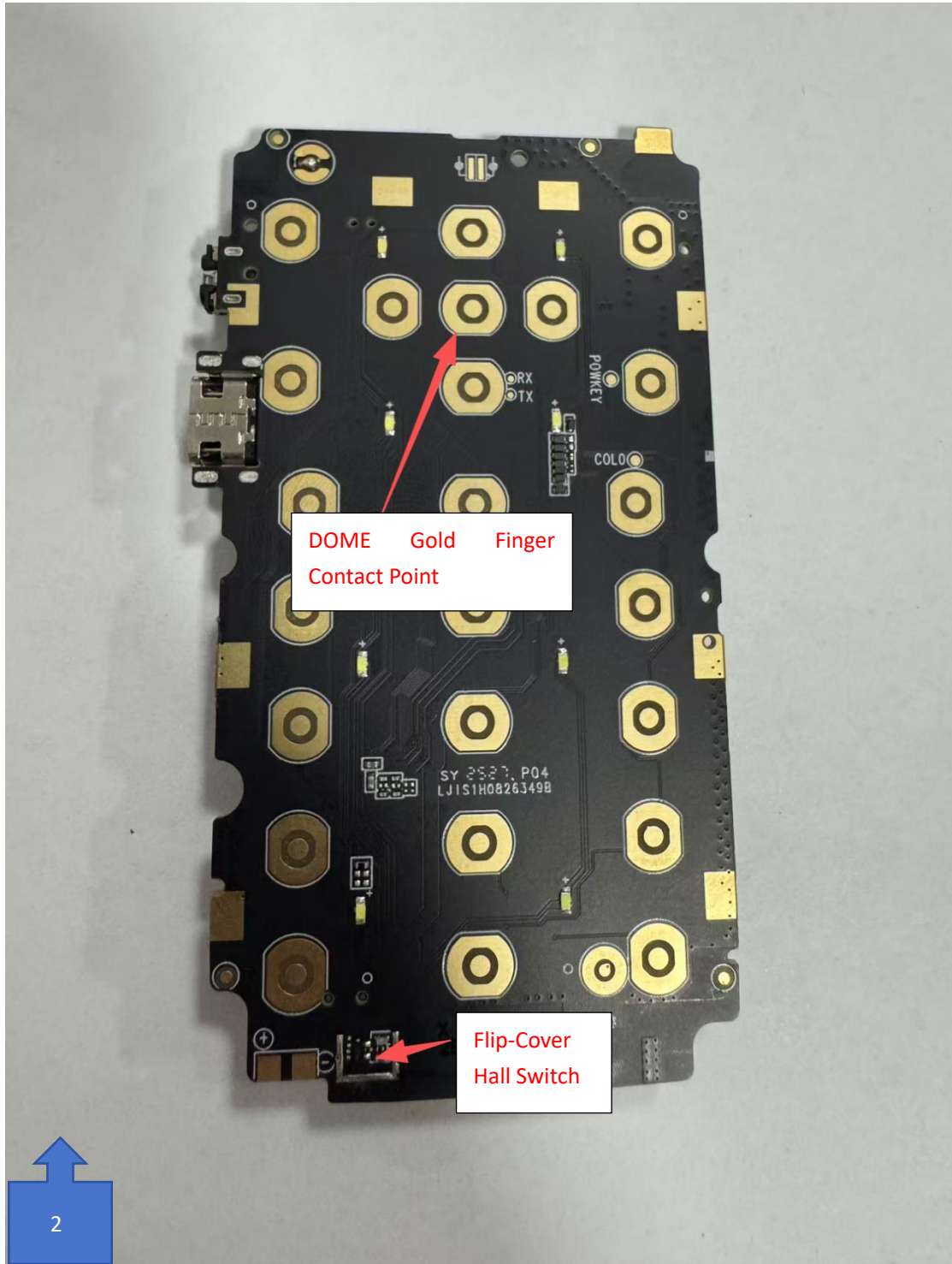
Place the tamper-evident sticker on the screw in the bottom-right corner (see Figure 1).



30. Detailed Description of the Motherboard

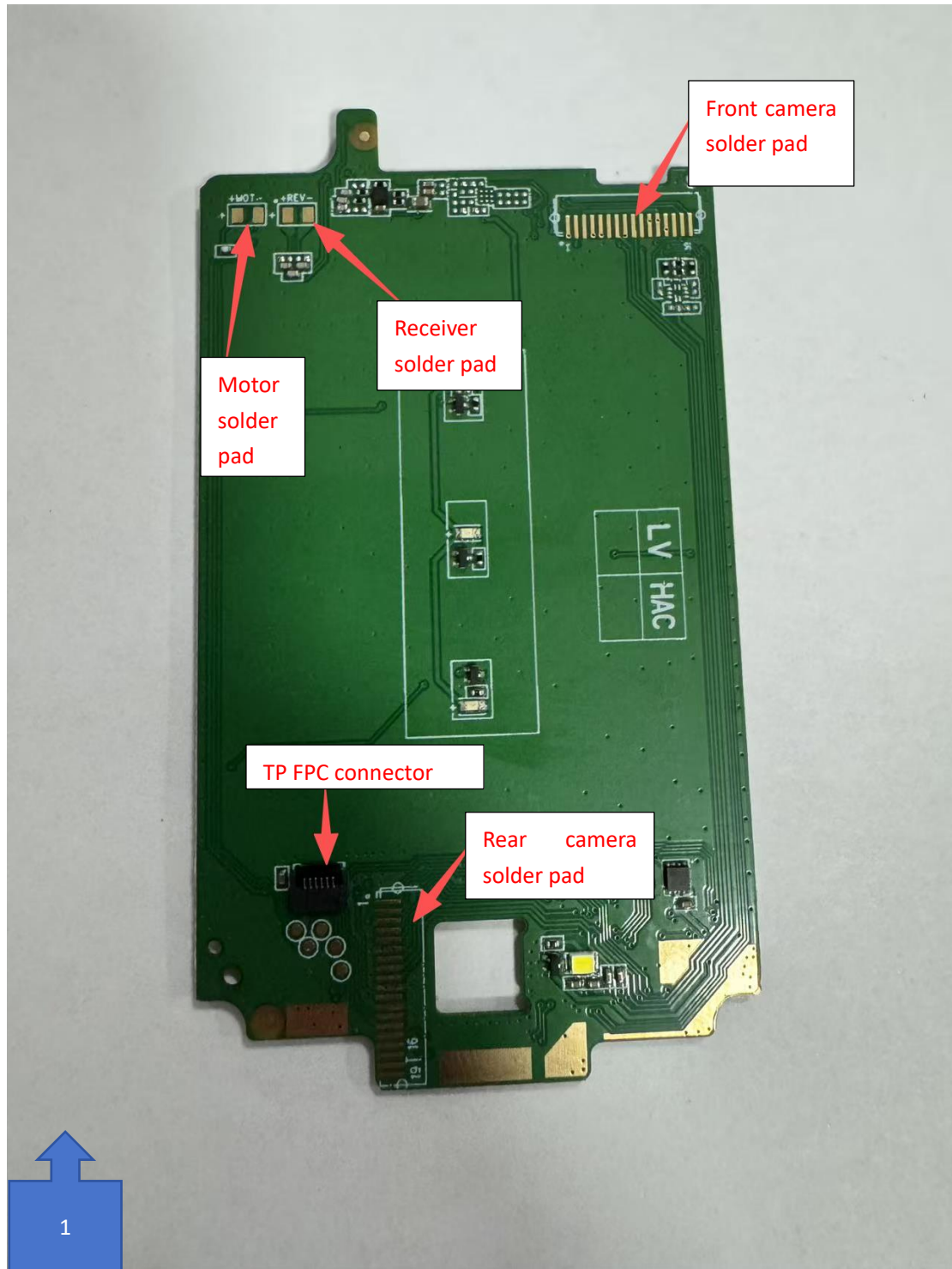
The motherboard is illustrated and described in detail in Figures 1 and 2.

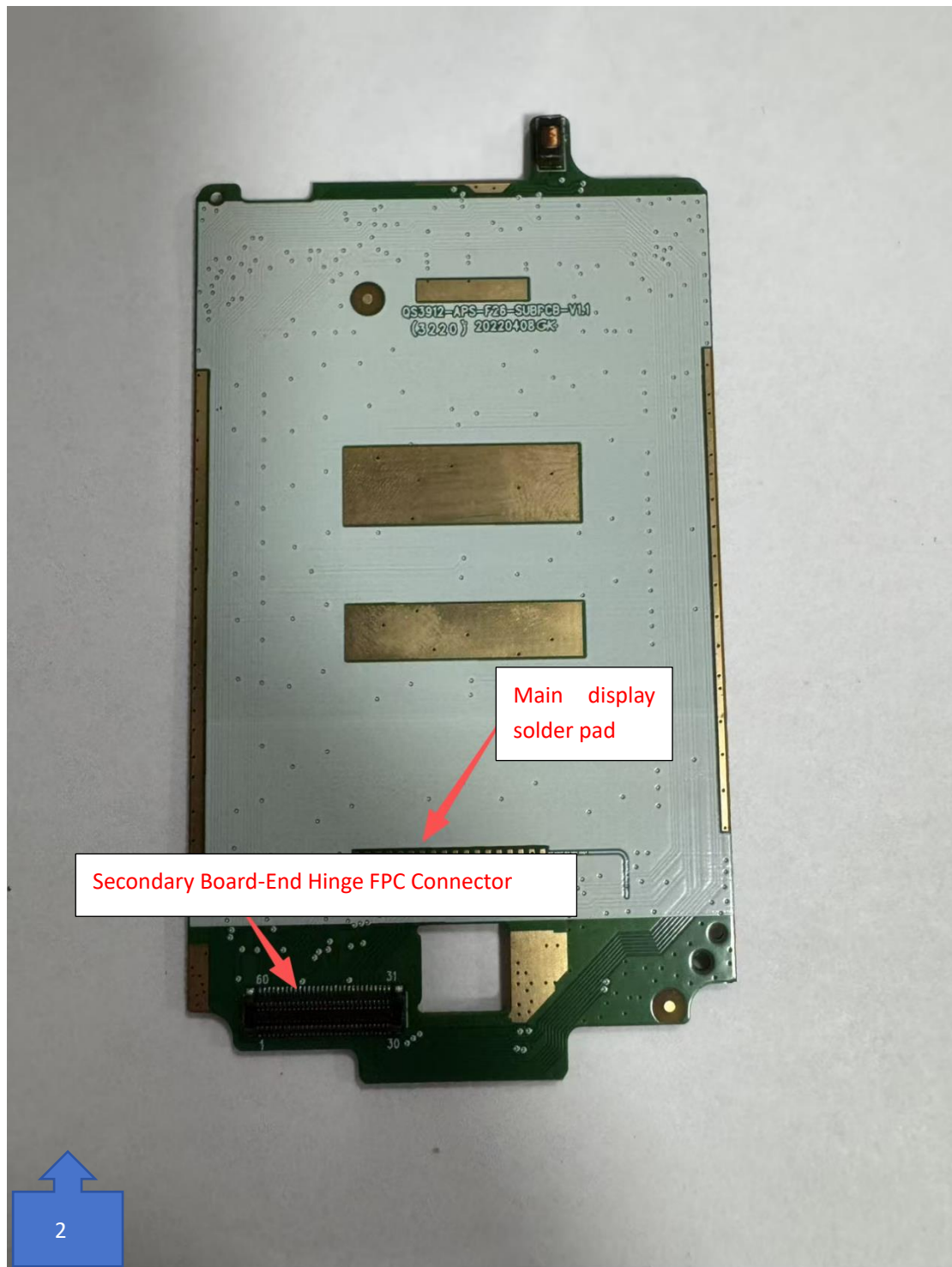




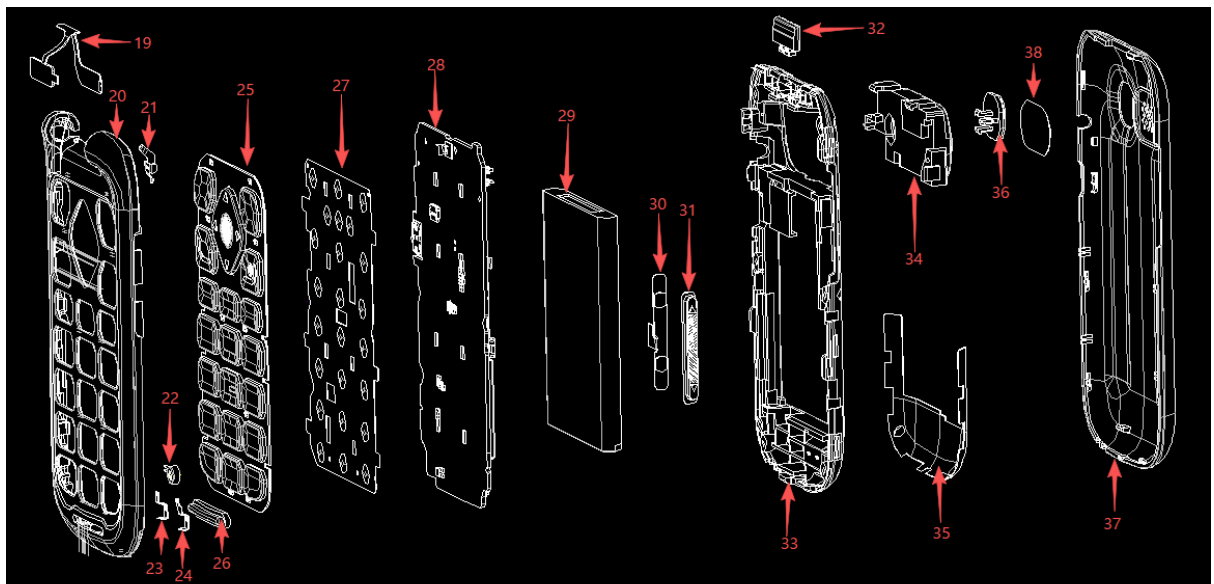
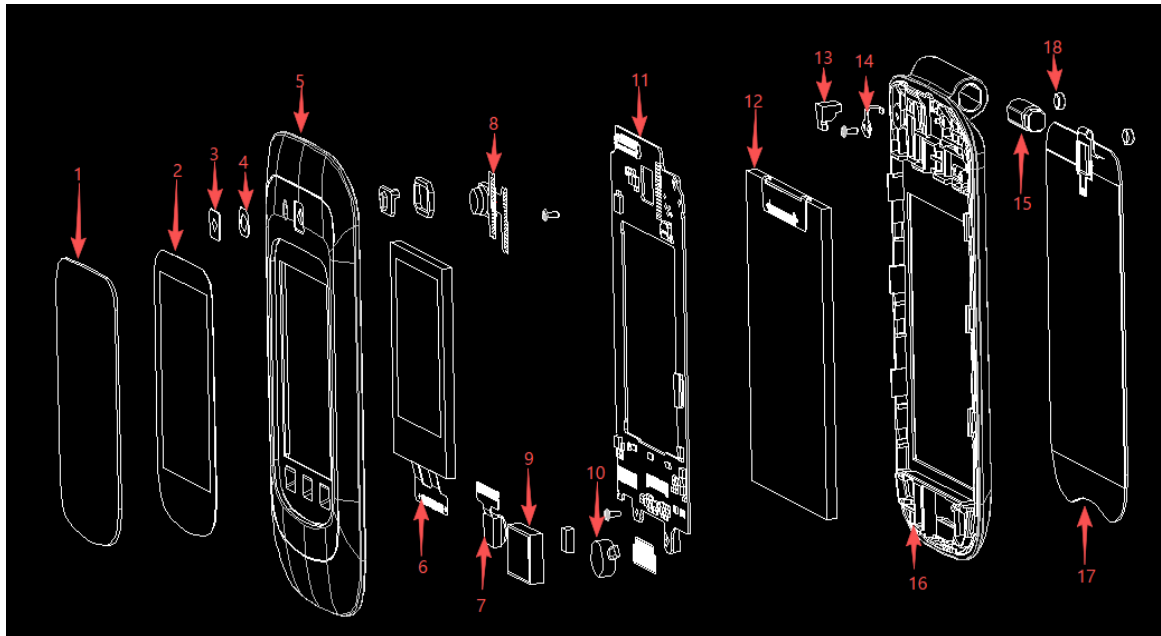
31. Detailed Description of the Secondary Board

The secondary board is illustrated and described in detail in Figures 1 and 2.





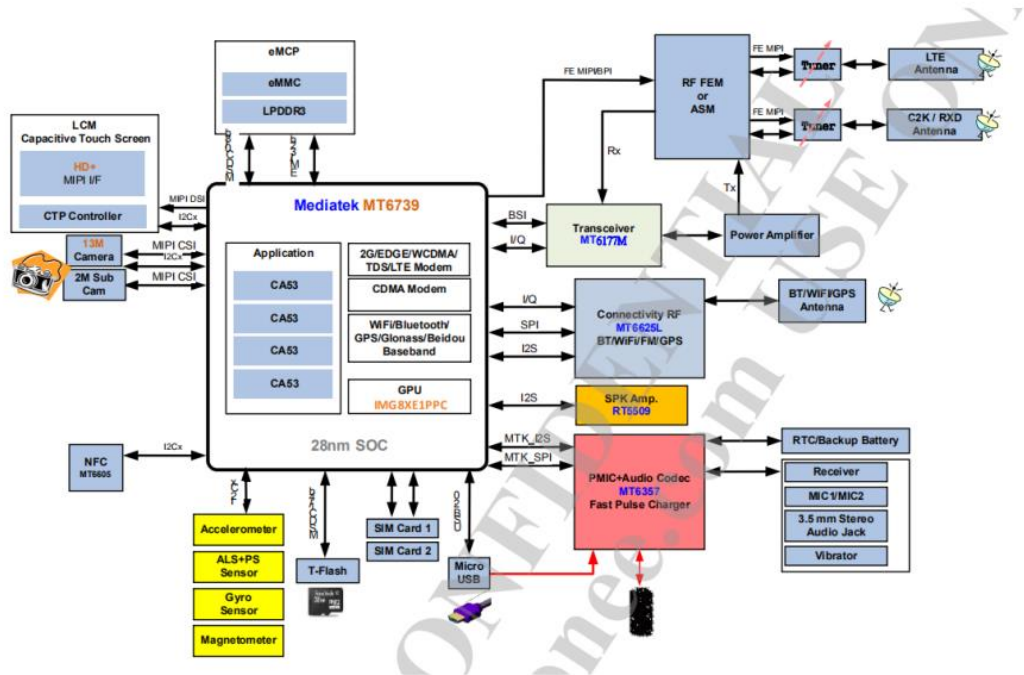
32. Exploded View, as shown below:



No.	Component Name	Quantity
1	Secondary Screen Lens Protective Film	1
2	Secondary Screen Lens	1
3	Flashlight Foam	1
4	Flashlight Cover	1
5	A-Cover Assembly	1
6	Secondary Screen LCD	1
7	Front Camera	1
8	Rear Camera	1
9	Earpiece	1
10	Motor	1
11	Secondary Board Assembly	1
12	Main Screen LCD	1
13	Hinge Stopper	1
14	B-Cover Hinge Ground Spring	1
15	Hinge Assembly	1
16	B-Cover Assembly	1
17	TP Assembly	1
18	B-Cover Screw Plugs	2
19	Hinge FPC	1
20	C-Cover Assembly	1
21	C-Cover Hinge Ground Spring	1
22	Microphone	1
23	Charging Spring 1	1
24	Charging Spring 2	1
25	Key Assembly	1
26	C-Cover Hinge Bumper Stopper	1
27	DOM Sheet	1
28	Motherboard PCBA	1
29	Battery	1
30	Side Key FPC	1
31	Volume Side Key	1
32	D-Cover Hinge Stopper	1
33	D-Cover Assembly	1

No.	Component Name	Quantity
34	Speaker Assembly	1
35	Main Antenna FPC	1
36	SOS Key	1
37	Battery Cover Assembly	1
38	Speaker Mesh	1

33. Circuit Schematic Diagram, as shown below:



Version 1.0

©2025. All rights reserved.



TouchFlip Repair Manual

How to contact us

Email us at help@opelmobile.com or call

☎ **0808 160 7167** in UK (8am to 4pm, Mon to Fri – excluding national holidays)

☎ **1800 456 902** in Ireland (8am to 4pm, Mon to Fri – excluding national holidays)